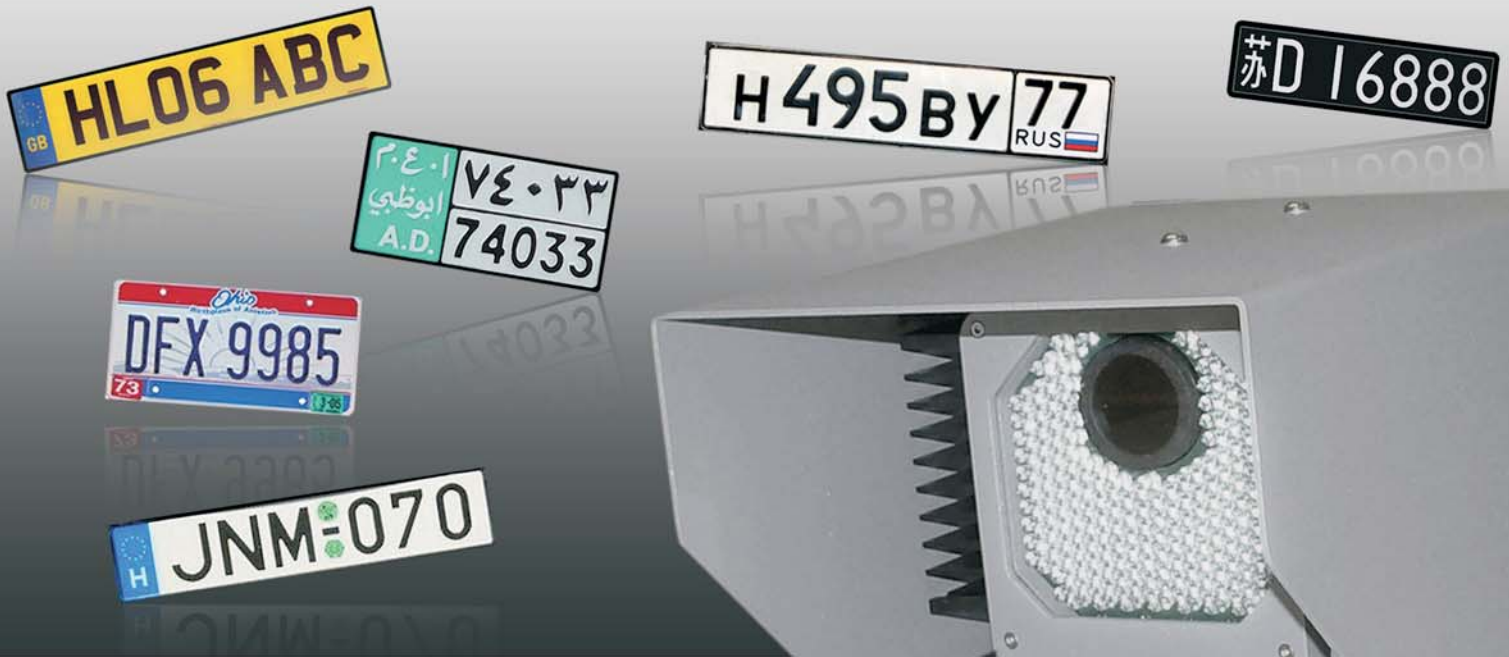


FXCAM d102c ANPR smart camera

B&W smart camera for ITS traffic and access control systems



FXCAMd 102c is a special smart camera which is assembled from ARH products. It is a pre-built ANPR/LPR system, including

- ANPR camera
- PC
- ANPR software.

Fixed factory settings make the installation and startup process easy and quick. The camera is ready to operate right after the power is switched on.

The integration process of the FXCAMd 102c is very easy: the stored images and recognition data can be downloaded through a webserver.

FXCAMd 102c itself provides the optimal images, which are automatically passed to Carmen ANPR engine. Ideal for moving traffic applications.

To provide optimal image quality in various operating environments, the camera is equipped with an infra-red illuminator unit that is built-in to the camera housing.

The infrared light provides excellent illumination for reflective number plates both day and night.

Effective range is up to 15 meters (48ft) but it may vary depending on the specific environmental conditions.

The advanced camera technology is dedicated for 24/7 number plate recognition.